

Naye Sapne
Sajane mein
Break nahin banta

Sylvān⁺ply[®]
break nahiin banta

PLYWOOD | BLOCKBOARD | FLUSH DOOR

www.sylvanply.com



Content

About us	05
Vision	06
The Core of our Wooden existence	06
Rewards & Recognitions	07
The Chairman's Desk	08
The Director's Desk	09
Makers of the Sylvan Ply at Work	10
The Genesis	11
The Versatile Plywood	12
Premium Segment Ply & Blockboard	
• Z+ Premium Ply	13
• Z+ Premium Blockboard	14
• Z+ Ply	15
• Z+ Blockboard	16
• Oceanic Premium Ply	17
• Oceanic Premium Blockboard	18
Mid Segment Ply & Blockboard	
• Primo Plus Ply	19
• Primo Plus Blockboard	20
• Robusta Ply	21
• Robusta Blockboard	22
Budget Segment Ply & Blockboard	
• BLU BWP Ply	23
• BLU BlockBoard	24
• BLU BWR Ply	25
• BLU MR Ply	26
• BLU MR Blockboard	27



Content

Modular Segment Ply & Blockboard

- Modular Deco Ply 28
- Modular Oceanic Premium Ply 29
- Modular Oceanic Premium Blockboard 30
- Modular Robusta Ply 31
- Modular Robusta Blockboard 32
- Modular BLU Ply BWR 33
- Modular BLU Ply MR 34

Flush Door

- Z+ 35
- Gateway Pinewood 36
- Gateway Hardwood 37
- Robusta Mix Pine 38
- Robusta Hardwood 39

Distinct Products

- Fire Retardant Ply 40
- 100% Pine Ply 41
- Elasto Flexi Ply 42
- Shuttering Ply Builder 43

The Eco-friendly Ply 44

Raw materials 45

In-house resin 46

Research and Development 47

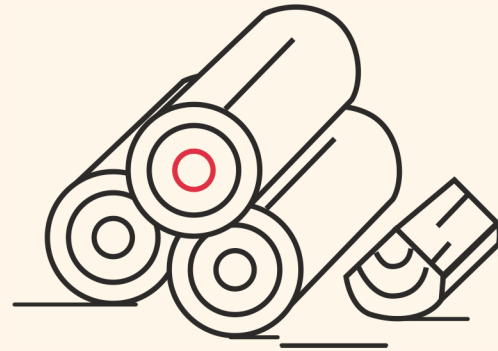
Our growing presence 48

Prestigious clients of Sylvan Ply 49



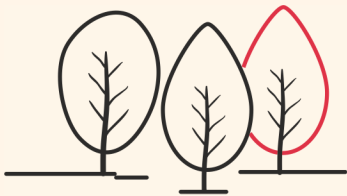
About us

Millions walk the roads of our nation every day, all part of an anonymous crowd. No one knows who they are or what they do. Only some stand out among the throng of the ordinaries. They go on and on relentlessly in a tireless pursuit of their goals. They are the Performers, the Strivers, and the Achievers. Nothing can break their will power and determination; they progress with persistence in their perseverance. Sylvan Ply is one revered member of that league. Tough, diligent plywood with layers bonded so closely that not even a single split can be spotted in their binding. With such a resilient ply, really, "break nahiin banta".



Vision

The company is committed to the excellence of the highest standards of production processes by using the best resources, cutting edges technologies, continuous research, and infrastructural up gradation. These are the attributes that have helped us in achieving and sustaining our undisputed reputation for quality products at competitive prices. Thus, our slogan is "break nahiin banta".



The core of our wooden existence

The imported high-density timber wood: Sylvan Ply is made of imported high-density timber core and veneer, this variety of plywood has a density which is much higher than the ordinary ones. This makes our ply more compact and dimensionally stable.

Imported high-density timber has natural straight grains that make the plywood warp-free and the logs completely stress-free. Imported high-density timber plywood is extremely smooth and durable. This variety of ply also offers more resistance to moisture, as well as borers and termites.

The New Zealand pinewood & American yellow pinewood:

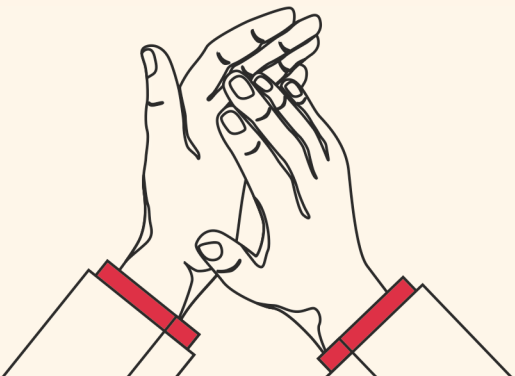
This semi soft-wood is durable, termite resistant, and has a low shrinkage capacity, which contributes majorly to its stability. This variety of wood is denser and more resinous as well. It is mainly used in making Blockboard for high- value carpentry.

Rewards & Recognitions

Sylvan Ply board (I) Ltd. is a member of The Indian Green Building Council.

All Sylvan Ply products use ISI certified with relevant IS Codes.

ISO 14001:2015, ISO 45001:2018 & ISO 9001:2015 certified company.



The Chairman's Desk



A dream combined with great passion and a knack of seizing an opportunity at the right moment, are the factors that combined to create the entity, Sylvan Ply board (India) Ltd. Our core values are commitment to quality, appreciation towards our people, creating value for our stakeholders, and investing in the best of technological innovations. We aim to contribute to communities & the environment to the best of our abilities and to meet the expectations of our customers, suppliers, and employees.



J. P. Singh
Chairman

The Director's Desk



We would never have reached the pinnacle of success without the dedicated contribution of our customers, dealers, architects, contractors & extremely hard-working employees. Together, we have had an incredible journey thus far. We look forward to continuing to serve and support all of you, and not only meet but exceed your expectations. We are putting our best effort to contribute value to our environment to keep the balance.

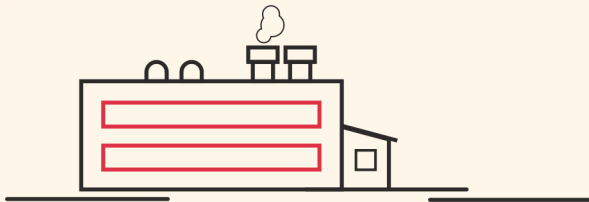
Anand Singh

Director



Makers of the Sylvan Ply at Work

Spread over a sprawling 50 acres, the Sylvan Ply factory at Baidyabati, Sreerampore (45 km from Kolkata) is equipped with the latest state-of-the-art machinery to manufacture the finest quality of plywood. There is an efficient and skilled workforce of 2500. Their dedication and high level of efficiency are the main reasons behind Sylvan's legacy in the market today.



The Genesis

Sylvan Ply is manufactured in our state-of-the-art facilities under stringent quality control norms at Baidyabati (West Bengal). The layout of the plant ensures a smooth flow of production with the help of high-tech imported machinery, tenderized core composed core materials, wide belt sander finishing polish machine, etc., under a clean and healthy atmosphere and strict safety norms.



The Versatile Plywood

Several reasons behind your decision

- Modern state-of-the-art technology plant.
- Imported high-density timber logs for better intrinsic strength and long-lasting value.
- Imported Core Composer machine that tenderizes the log's core to avoid warping and bending and maintains the uniform thickness of the ply.
- Auto Panel Sizer machine which gives a perfect diagonal and smooth edge to the ply.
- Imported Panel Jointer machine which makes the ply fully Zero-gap.
- Superior bonding for a long-lasting experience.
- Usage of phenol-formaldehyde resin for high internal bonding of constituent layers.
- German glue line formula for 100% borer and termite resistance.
- Pre-pressed technology for strong and uniform glue penetration with the high tensile strength to diffuse moisture contents.
- Membership of IGBC (The Indian Green Building Council) and compliance with necessary BIS standards, warranting our products.



‘Quality is remembered for long, the price is forgotten’



PREMIUM SEGMENT PLY & BLOCKBOARD



Z+ PREMIUM PLY

Z+ Premium Ply is considered to be an exclusive product from Sylvan Ply. The multiuse of the product makes it one of the most preferred brands in the market. Imported high-density timber adds extra density and thickness to the product, which provides better durability and dimensional stability. This ply is boiling waterproof, which extends the longevity of the ply.

End Usage: Ship floor | Boatbuilding | Paneling in bulkheads | Lining for refrigerated ships | Cooling towers | Wall Paneling | Ceilings | Cabinet | Partitions

Range of thickness: 4mm | 6mm | 9mm | 12mm | 16mm | 19mm | 25mm

Raw Material, Production Process & U.S.P. :

- Hexadic calibrated tech (6 times) for mirror quality smooth finish
- Anti fungal and anti bacteria coating
- Formaldehyde Emission level: E1 as per European standard
- 15 layered ply for 19 mm (Additional 2 layers for other thickness)
- 13 layered ply for 16 mm (Additional 2 layers for other thickness)
- 11 layered ply for 12 mm (Additional 2 layers for other thickness)
- Imported High-density timber
- Face thickness of 1 mm
- Double Tenderized composed core treated in impregnation plant
- Hydroxybenzene base adhesive
- Long panels for better durability
- Fully preservative treated for borer, termite and fungus
- High-quality preservatives
- Long core
- Face –Gurjan
- Core –Gurjan
- Calibrated core

Specification

Density	:	Above 0.75 gm/cm ³
Moisture content	:	8 to 12%
Glue shear strength	(in dry) :	Above 180 kgf
	(in wet) :	Above 160 kgf
Tensile strength	:	Above 550 kgf/cm ²
	(in face grain)	Above 450 kgf/cm ²
	(in the right angle to the face grain)	
Sum of value	:	Above 1050 kgf/cm ²
Static bending strength		
MOE (Modulus of Elasticity)	:	Above 8500 N/mm ²
	(along the face grain)	Above 5000 N/mm ²
	(across the face grain)	
MOR (Modulus of Rupture)	:	Above 70 N/mm ²
	(along the face grain)	Above 50 N/mm ²
	(across the face grain)	
Screw holding strength	:	Above 350 kgf
Nail holding strength	:	Above 150 kgf
Swell in water after 8 hours	:	Less than 1%
Mycological strength	:	Excellent
Retention of preservative	:	More than 15 kg/m ³
Preservative	:	A.C.C Fixed Type
Warranty	:	Any manufacturing defects as per warranty certificate

Z+ PREMIUM BLOCKBOARD

Z+ Premium Blockboard is ideal for home and office furniture, partitions, and shutters. The chemically treated and seasoned imported pine wood is processed in Sylvan Ply's factory, where it is shaped into boards.

It has been specifically manufactured with an excellent nail holding capacity that allows the Blockboard to be assembled into any furniture with ease.

End Usage: Furniture | Partitions | Racks & shelves | Shutters

Range of thickness: 16mm | 19mm | 25mm

Raw Material, Production Process & U.S.P. :

- Hexadic calibrated tech (6 times) for mirror quality smooth finish
- Anti fungal and anti bacteria coating
- Formaldehyde Emission level: E1 as per European stranded
- 100% High-density Imported Pine
- Four tire chemical Treatment & Seasoned
- High Dimensional Stability & Strength
- Fully preservative treated for borer, termite, and fungus
- Uniform Thickness
- 100 % Boiling Water Proof
- Tenderized Long core

Specification

Density	: Above 0.70 gm/cm ³
Moisture content	: 6 to 8%
Adhesion of plies	: Excellent
MOE (Modulus of Elasticity)	: Above 7000 N/mm ²
MOR (Modulus of Rupture)	: Above 65 N/mm ²
Preservative	: C.C.B fixed type
Water absorption	: Below 1%
Screw holding strength	: Above 1600 N
Nail holding strength	: Above 1300 N
Preservative Treatment	: B/B.A. treatment in battens
Warranty	: Any manufacturing defects as per warranty certificate



Z+ PLY

Sylvan Z+ Ply is considered to be a premium product from Sylvan Ply. The multiuse of the product makes it one of the most popular brands in the market. Imported high-density timber adds extra density and thickness to the product, which provides better durability and dimensional stability. The 1 mm thickness of the face on the product makes it long-lasting and reusable. This ply is boiling waterproof, which extends the longevity of the ply.

End Usage: Ship floor | Boatbuilding | Paneling in bulkheads | Lining for refrigerated ships | Cooling towers | Wall Paneling | Ceilings | Cabinet | Partitions

Range of thickness: 4mm | 6mm | 9mm | 12mm | 16mm | 19mm | 25mm

Raw Material, Production Process & U.S.P. :

- Hexadic calibrated tech (6 times) for mirror quality smooth finish
- Anti fungal and anti bacteria coating
- Formaldehyde Emission level: E1 as per European stranded
- Imported High-density timber
- Face thickness of 0.6 mm
- Tenderized composed core treated in impregnation plant
- Hydroxybenzene base adhesive
- Long panels for better durability
- Fully preservative treated for borer, termite, and fungus
- High-quality preservatives
- Long core
- Face – Gurjan or equivalent
- Core – Gurjan or equivalent high-density imported red core
- Calibrated core

Specification

Density	: Above 0.75 gm/cm ³
Moisture content	: 10 to 12%
Glue shear strength	(in dry) : Above 165 kgf (in wet) : Above 145 kgf
Tensile strength	: Above 500 kgf/cm ² (In face grain) Above 400 kgf/cm ² (In right angle to the face grain)
Sum of value	: Above 1000 kgf/cm ²
Static bending strength	
MOE (Modulus of Elasticity)	: Above 8300 N/mm ² (Along the face grain) Above 4800 N/mm ² (Across the face grain)
MOR (Modulus of Rupture)	: Above 68 N/mm ² (Along the face grain) Above 48 N/mm ² (Across the face grain)
Screw holding strength	: Above 325 kgf
Nail holding strength	: Above 125 kgf
Swell in water after 8 hours	: Less than 1%
Mycological strength	: Excellent
Retention of preservative	: More than 12 kg/m ³
Preservative	: A.C.C Fixed Type
Warranty	: Any manufacturing defects as per warranty certificate

Z+ BLOCKBOARD

Z+ Blockboard is good for premium furniture. The Blockboard is thoroughly processed with pre-press technology and is highly durable even when exposed to boiling water.

End Usage: Ship floor | Boatbuilding | Paneling in bulkheads
Lining for refrigerated ships | Cooling towers

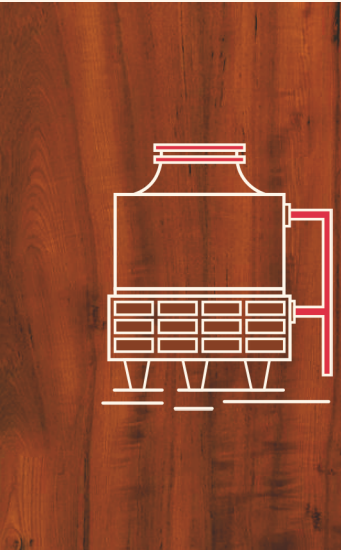
Range of thickness: 16mm | 19mm | 25mm

Raw Material, Production Process & U.S.P. :

- Hexadic calibrated tech (6 times) for mirror quality smooth finish
- Anti fungal and anti bacteria coating
- Formaldehyde Emission level: E1 as per European stranded
- Fully preservative treated for borer, termite, and fungus
- 100% imported pine
- 100% tenderized core composed and pre-press technology
- 3 tier chemical treatment in core and panel
- High-density
- High durability
- Uniform thickness
- 100% boiling water-proof
- Calibrated core

Specification

Density	: Above 0.70 gm/cm ³
Moisture content	: 8 to 12%
Glue adhesion strength	: Excellent
Adhesion of ply	: Excellent
Nail holding strength	: Above 1200 N
Screw holding strength	: Above 1500 N
MOE (Modulus of Elasticity)	: Above 6800 N/mm ²
MOR (Modulus of Rupture)	: Above 64 N/mm ²
Preservative	: C.C.B Fixed Type
Water absorption	: Below 1%
Warranty	: Any manufacturing defects as per warranty certificate



OCEANIC PREMIUM PLY

Oceanic Premium Ply is manufactured by using the finest quality of imported timber. The layers are bonded with an undiluted phenol-formaldehyde resin. This variety of plywood withstands everything from alternative wetting and drying to the harmful effects of saline seawater and microorganisms. It is used widely in the shipbuilding industry. This ply is boiling waterproof, which extends the longevity of the ply.

End Usage: Ship floor | Boatbuilding | Paneling in bulkheads | Lining for refrigerated ships | Cooling towers | Wall Paneling | Furniture | Kitchen Cabinet

Range of thickness: 4mm | 6mm | 9mm | 12mm | 16mm | 19mm | 25mm | 28mm | 36mm | 38mm | 40mm

Raw Material, Production Process & U.S.P. :

- Quinate calibrated tech (5 times) for smooth finish
- Anti fungal and anti bacteria coating
- Formaldehyde Emission level: E1 as per European stranded
- Fully preservative treated for borer, termite, and fungus
- Imported High-density timber
- Chemically treated Composed Core & veneers
- Long Core
- Face – Gurjan or equivalent
- Core – Gurjan /UC/ other High-density imported core /
- Calibrated core for a smooth finish
- Face 0.5mm+
- Glue – Hydroxybenzene base adhesive

Specification

Density	: Above 0.70 gm/cm ³
Thickness tolerance	: Up to 4 mm ± 10% above 4 mm ± 5%
Moisture content	: 8 to 10%
Mycological test	: Complies with the requirement
Glue shear strength (Dry state)	: 1660 N
Preservative	: Acid copper chrome composition
Glue shear strength (Wet state)	: 1400 N
Adhesion of plies	: Excellent
Tensile strength	: Above 480 kgf /cm ² (In face grain) Above 375 kgf /cm ² (In right angle to face grain)
Sum of Value	: Above 960 kgf/cm ²
Static Bending Strength	
MOE (Modulus of Elasticity)	: Above 7800N/mm ² (Along the face grain) Above 4600 N/mm ² (Across the face grain)
MOR (Modulus of Rupture)	: Above 60N/mm ² (Along the face grain) Above 48 N/mm ² (Across the face grain)
Screw holding strength	: Above 300 kgf
Nail holding strength	: Above 120 Kgf
Retention of preservation	: Above 12Kg/m ³
Wet bending strength	
MOE (Modulus of Elasticity)	: Above 4800N/mm ² (Along the face grain) Above 3600 N/mm ² (Across the face grain)
MOR (Modulus of Rupture)	: Above 45N/mm ² (Along the face grain) Above 34 N/mm ² (Across the face grain)
Warranty	: Any manufacturing defects as per warranty certificate

OCEANIC PREMIUM BLOCKBOARD

Oceanic Premium Blockboard is a IS: 1659 certified Blockboard. It is endowed with qualities like density, moisture content, water absorption, and overall strength. This brand conforms to the high-quality standards required for premium oceanic works. This ply is boiling waterproof, which extends the longevity of the ply.

End Usage: Modular kitchen furniture | Cupboard Cabinet | Almirah | Cabinet | Ceiling | Doors

Range of thickness: 4mm | 6mm | 9mm | 12mm | 16mm | 19mm | 25mm

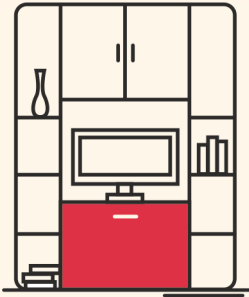
Raw Material, Production Process & U.S.P. :

- Quinate calibrated tech (5 times) for smooth finish
- Anti fungal and anti bacteria coating
- Formaldehyde Emission level: E1 as per European stranded
- Fully preservative treated for borer, termite, and fungus
- 100% American or other imported pine wood
- Chemically treated and seasoned
- High dimensional stability & strength
- Calibrated core for a smooth finish
- Fillers – American Pinewood
- Face – Gurjan or equivalent
- Core - Gurjan / UC/ or equivalent High-density imported Hardwood

Specification

Density	: 0.65 gm/cm ³
Moisture content	: 8 to 15%
Adhesion of plies	: Excellent
MOE (Modulus of Elasticity)	: Above 6000 n/mm ²
MOR (Modulus of Rupture)	: Above 60 n/mm ²
Preservative	: C.C.B Fixed type
Water absorption	: Below 1%
Screw holding strength	: 1100 N
Nail holding strength	: 600 N
Thickness	: ±5%
Preservative Treatment	: B/B.A. treatment in battens
Warranty	: Any manufacturing defects as per warranty certificate

MID SEGMENT PLY & BLOCKBOARD



PRIMO PLUS PLY

Primo Plus 710 Ply is a blend of quality, strength, and durability. It is manufactured with utmost care and caution by using imported high-density timber, which ensures the ply's natural strength and durability. The layers are bonded with superior quality phenol-formaldehyde resin which makes them highly resistant to wood borer, termite, and fungus attacks. This ply is boiling waterproof, which extends the longevity of the ply.

End Usage: Furniture | Wall Paneling | Ceiling | Cabinet | Partitions

Range of thickness: 4mm | 6mm | 9mm | 12mm | 16mm | 19mm | 25mm

Raw Material, Production Process & U.S.P. :

- Tetrat calibrated tech (4 times) for smooth finish
- Anti fungal and anti bacteria coating
- Formaldehyde Emission level: E1 as per European standard
- Fully preservative treated for borer, and termite proof
- Imported High-density timber
- Unique glue line protection formula
- Face – Gurjan or equivalent
- Core – Gurjan / UC / other High-density hardwood / calibrated core
- Face Thickness: 0.45 mm+

Specification

Density	:	0,65 gm/cm ³
Thickness tolerance	:	Up to 4mm ± 10% and above 4mm±5%
Moisture content	:	8 to 10%
Mycological test	:	> 1000 N
Glue shear strength	(dry) :	> 1350 N
Glue shear strength	(wet) :	> 1000 N (After 72hrs. Boiling)
Static bending strength	:	MOE (Modulus of Elasticity)
Along the face grain	:	> 7500 N/mm ²
Across the face grain	:	> 4000 N/mm ²
MOR (Modulus of Rupture)	:	
Along the face grain	:	> 50 N/mm ²
Across the face grain	:	> 30 N/mm ²
Wet bending strength	:	MOE (Modulus of Elasticity)
Along the face grain	:	> 3750 N/mm ²
Across the face grain	:	> 2000 N/mm ²
MOR (Modulus of Rupture)	:	
Along the face grain	:	> 25 N/mm ²
Across the face grain	:	> 15 N/mm ²
Density	:	0,60 gms/cm ³
Tensile Strength	:	Above 450 kgf /cm ² (In face grain) Above 370 kgf /cm ² (In right angle to face grain)
Sum of value	:	Above 920 kgf/cm ²
Warranty	:	Any manufacturing defects as per warranty certificate

PRIMO PLUS BLOCKBOARD

Primo Plus BWP grade Blockboard with IS: 1659 is the ideal product for home and office furniture, partitions, and shutters. The chemically treated and seasoned imported pine wood is processed in the own factory of Sylvan Ply, having an excellent nail holding capacity that allows the Blockboard to be assembled into any furniture with ease. This ply is boiling waterproof, which extends the longevity of the ply.

End Usage: Furniture | Partitions | Racks & shelves | Shutters

Range of thickness: 16mm | 19mm | 25mm

Raw Material, Production Process & U.S.P. :

- Tetrad calibrated tech (4 times) for smooth finish
- Anti fungal and anti bacteria coating
- Formaldehyde Emission level: E1 as per European stranded
- Fully preservative treated for borer, and termite proof
- 100% New Zealand pine wood
- Seasoned Timber
- High dimensional stability & strength
- Face – Gurjan or equivalent
- Core – Gurjan/UC/other High-density hardwood
- Calibrated core

Specification

Thickness tolerance	: ±5%
Moisture content	: 10 to 12%
Water resistance	: >72 hrs.
MOE (Modulus of Elasticity)	: >5000 N/mm ²
MOR (Modulus of Rupture)	: >50 N/mm ²
Density	: >0.45 gms/cm ³
Screw holding strength (kgf)	: >100
Nail holding strength (kgf)	: >50
Water absorption	: <1%
Preservative treatment	: B/B.A treatment in battens
Adhesion of plies	: (kgf) > excellent (After 72hrs. boiling)
Warranty	: Any manufacturing defects as per warranty certificate

ROBUSTA PLY

Robusta Ply is a blend of quality, strength, and durability. It is manufactured with utmost care and caution by using imported timber, which ensures the ply's natural strength and durability. Sylvan Robusta Ply layers are bonded with superior quality phenol-formaldehyde resin which makes them highly resistant to wood borer, termite, and fungus attacks.

End Usage: Furniture | Wall Paneling | Ceiling | Cabinet | Partitions

Range of thickness: 4mm | 6mm | 9mm | 12mm | 16mm | 19mm | 25mm

Raw Material, Production Process & U.S.P. :

- calibrated tech
- Anti fungal and anti bacteria coating
- Formaldehyde Emission level: E1 as per European standard
- Borer, and termite resistant
- High-density imported timber
- Glue line protection formula
- Face – Hardwood
- Core – Hardwood
- Glue – Phenol-formaldehyde
- Face Thickness: 0.35 mm

Specification

Moisture content	: 8 to 12%
Glue shear strength (dry)	: > 150 Kgf
Glue shear strength (wet)	: > 110 Kgf
Adhesion of Plies	: Excellent
Water absorption	: Below 1%
Nail Holding Strength	: Above 100 Kgf
Screw Holding Strength	: Above 200 Kgf.
MOE (Modulus of Elasticity)	
Along the face grain	: > 5200 N/mm ²
Across the face grain	: > 3500 N/mm ²
MOR (Modulus of Rupture)	
Along the face grain	: > 50 N/mm ²
Across the face grain	: > 30 N/mm ²
Density	: 0.55 gm/cm ³
Warranty	: Any manufacturing defects as per warranty certificate

ROBUSTA BLOCKBOARD

Sylvan Robusta Blockboard is the ideal product for home and office furniture, partitions, and shutters. The chemically treated and seasoned imported pine wood is processed in the own factory of Sylvan Ply. This Blockboard has an excellent nail holding capacity that allows the Blockboard to be assembled into any furniture with minimum hassle.

End Usage: Furniture | Partitions | Racks & shelves | Shutters

Range of thickness: 16mm | 19mm | 25mm

Raw Material, Production Process & U.S.P. :

- Calibrated tech
- Anti fungal and anti bacteria coating
- Formaldehyde Emission level: E1 as per European standard
- Borer, and termite resistant
- Imported pinewood Timber
- BWP grade resin IS: 848:2006
- Face – Made from Imported Timber
- Core – Hardwood
- Glue – Phenol-formaldehyde
- Fillers – Imported Pinewood

Specification

Moisture content	: 10 to 15%
MOE (Modulus of Elasticity)	: > 5000 N/mm ²
MOR (Modulus of Rupture)	: >50 N/mm ²
Density	: 0.45 gm/cm ³
Screw holding strength	: > 1000N
Nail holding strength	: > 500N
Water absorption	: <1%
Preservative	: C.C.B fixed type
Adhesion of plies	: Excellent
Preservative treatment	: B/B.A treatment in battens
Warranty	: Any manufacturing defects as per warranty certificate

BUDGET SEGMENT PLY & BLOCKBOARD

BLU BWP PLY

BLU BWP Grade Ply is the ideal product for daily use, for both homes and office spaces. The brilliant texture of the ply is crafted from the remarkable quality of imported timber that assures strength and high durability. Sylvan Ply has used phenol-formaldehyde resin to shape the product with a unique glue line protection technique. This ply is boiling waterproof, which extends the longevity of the ply.

End Usage: Kitchen cabinets | Speaker cabinets | False ceilings |
Bedrooms | Partitions

Range of thickness: 4mm | 6mm | 9mm | 12mm | 16mm | 19mm | 25mm

Raw Material, Production Process & U.S.P. :

- Calibrated tech
- Anti fungal and anti bacteria coating
- Formaldehyde Emission level: E1 as per European standard
- Borer, and termite resistant
- Unique glue line protection formula
- High-density imported timber
- Face: Hardwood
- Core: Hardwood
- Glue – Phenol-formaldehyde
- Face thickness – 0.30mm

Specification

Moisture content	: 8 - 12 %
Glue shear strength	: >160 kgf
Density	: 0.50 gm/cc
Screw holding strength	: Above 250 kgf
Nail holding strength	: Above 60 kgf
Water Absorption	: Below 1%
MOE (Modulus of Elasticity)	: Above 5500 N/mm ² (Along the face grain) Above 4000 N/mm ² (Across the face grain)
MOR (Modulus of Rupture)	: Above 55 N/mm ² (Along the face grain) Above 45 N/mm ² (Across the face grain)
Adhesion of plies	: Excellent
Warranty	: Any manufacturing defects as per warranty certificate



BLU BLOCKBOARD

Sylvan BLU BWP grade Blockboard is manufactured from fiber-enriched imported hardwood timber. This brand is brilliantly produced with high density and uniform thickness. It doesn't allow warping and also resists the invasion of termites and borers. Sylvan Ply has modified the Blockboard with high mechanical strength, so it can be used for various strength bearing purposes, without bending under any woodworking condition. The product is boiling waterproof, which prolongs the longevity of it.

End Usage: Furniture | Cabinet

Range of thickness: 16 mm | 19mm | 25mm

Raw Material, Production Process & U.S.P. :

- Calibrated tech
- Anti fungal and anti bacteria coating
- Formaldehyde Emission level: E1 as per European standard
- Borer, and termite resistant
- Imported hardwood timber
- BWP Grade Resin IS- 848:2006
- Face: Hardwood
- Core: Hardwood
- Glue – Phenol-formaldehyde
- Fillers: Hardwood fillers
- Face thickness – 0.3mm

Specification

Thickness tolerance	: ±5%
Moisture content	: 10 to 12%
Water resistance	: 72 hrs. Boiling
MOE (Modulus of Elasticity)	: > 5000 N/mm ²
MOR (Modulus of Rupture)	: >50 N/mm ²
Density	: 0.45 gms/cm ³
Screw holding strength	: >100 kgf
Nail holding strength	: >50 kgf
Water absorption	: <1%
Preservative treatment	: B/B.A treatment in battens
Adhesion of plies	: Excellent. (After 72hrs.boiling.)
Warranty	: Any manufacturing defects as per warranty certificate

BLU BWR PLY

With excellent features like high longevity and mechanical strength, Sylvan Ply takes great pride in its product BLU BWR Grade Ply. This highly durable plywood is a well-favored product due to many magnificent attributes like unmatched screw holding capacity, nail holding strength, uniform thickness, and much more. Apart from freedom from warping, it is water-resistant.

End Usage: Kitchen cabinets | Speaker cabinets | False ceilings | Bedrooms | Partitions

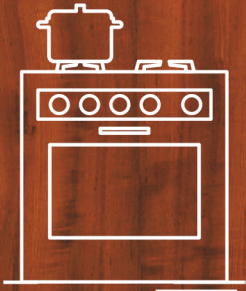
Range of thickness: 4mm | 6mm | 9mm | 12mm | 16mm | 19mm | 25mm

Raw Material, Production Process & U.S.P. :

- Calibrated tech
- Anti fungal and anti bacteria coating
- Formaldehyde Emission level: E1 as per European standard
- Borer, and termite resistant
- Standard thickness
- High-density timber
- Face: Hardwood
- Core: Hardwood
- Glue – MUF grade resin
- Face thickness – 0.30mm

Specification

Density	: 0.50gm/ cm ³
Moisture content	: 8 to 12%
Glue shear strength	: > 150 kgf (in dry) > 110 kgf (in wet)
Adhesion of plies	: Excellent
MOE (Modulus of Elasticity)	: (N/mm ²)
Along the grain	: 4500 above
Across the grain	: 3500 above
MOR (Modulus of Rupture)	: (N/mm ²)
Along the grain	: 48 above
Across the grain	: 30 above
Water absorption	: Below 1%
Screw holding strength	: Above 240 kgf
Nail holding strength	: Above 50 kgf
Warranty	: Any manufacturing defects as per warranty certificate



BLU MR PLY

With excellent features like high longevity and mechanical strength, Sylvan Ply takes great pride in its product Sylvan BLU MR Grade Ply. This highly durable plywood is a well-favored product due to many magnificent attributes like unmatched screw holding capacity, nail holding strength, uniform thickness, and much more. Apart from freedom from warping, it is also resistant to termites and borers.

End Usage: Kitchen cabinets | Speaker cabinets | False ceilings
Bedrooms | Partitions

Range of thickness: 4mm | 6mm | 9mm | 12mm | 16mm | 19mm | 25mm

Raw Material, Production Process & U.S.P. :

- Calibrated tech
- Anti fungal and anti bacteria coating
- Formaldehyde Emission level: E1 as per European standard
- Borer, and termite resistant
- Standard thickness
- High-density timber
- Face: Hardwood
- Core: Hardwood
- Glue – UF grade resin
- Face thickness – 0.30mm

Specification

Density	: 0.50gm/cm ³
Moisture content	: 8 to 12%
Glue shear strength	: > 150 kgf (in dry) > 110 kgf (in wet)
Adhesion of plies	: Excellent
MOE (Modulus of Elasticity)	: (N/mm ²)
Along the grain	: 4500 above
Across the grain	: 3500 above
MOR (Modulus of Rupture)	: (N/mm ²)
Along the grain	: 48 above
Across the grain	: 30 above
Water absorption	: Below 1%
Screw holding strength	: Above 240 kgf
Nail holding strength	: Above 50 kgf
Warranty	: Any manufacturing defects as per warranty certificate

BLU MR BLOCKBOARD

Sylvan BLU MR Grade Blockboard is yet another celebrated product of Sylvan Ply. This efficient Blockboard is manufactured from carefully selected hardwood/semi-hardwood. The highest level of bonding strength is ensured with the use of special urea-formaldehyde resin that is prepared in our factory with minute attention to details under the supervision of technical experts. As a result, this variety of Blockboard possesses a superlative degree of adhesive strength along with a high load-bearing capacity.

End Usage: Furniture

Range of thickness: 16 mm | 19mm | 25mm

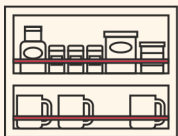
Raw Material, Production Process & U.S.P. :

- Calibrated tech
- Anti fungal and anti bacteria coating
- Formaldehyde Emission level: E1 as per European standard
- Borer, and termite resistant
- Standard thickness
- Imported High-density timber
- Face: Hardwood
- Core: Hardwood
- Glue – UF grade resin
- Fillers: hardwood fillers
- Face thickness – 0.30mm

Specification

Thickness tolerance	: ±5%
Moisture content	: 10 to 15%
Water resistance	: 3 hrs in water temp. 60 ±2%
MOE (Modulus of Elasticity)	: >4000 N/mm ²
MOR (Modulus of Rupture)	: >40 N/mm ²
Density	: 0.45 gms/cm ³
Screw holding strength	: >100 kgf
Nail holding strength	: >50 kgf
Water absorption	: <1%
Preservative treatment	: B/B.A treatment in battens
Adhesion of plies	: Excellent
Warranty	: Any manufacturing defects as per warranty certificate

MODULAR SEGMENT PLY & BLOCKBOARD



MODULAR DECO PLY

Sylvan + Modular Deco Plywood IS: 710 is the ideal choice for adding some decorative features to dazzling kitchens. The imported high-density timber uses more number of plies to enhance the strength and durability of this brand.

End Usage: Modular Kitchen Furniture

Range of thickness: 14 mm | 16 mm | 23 mm

Raw Material, Production Process & U.S.P. :

- Formaldehyde Emission level: E1 as per European standard
- Fully preservative treated for borer, termite, and fungus
- Imported timber
- Calibrated core
- Unique glue line protection formula
- Undiluted Phenol-formaldehyde resin as adhesive
- Face – High-density decorative face
- Face – Decorative Face
- Core – High-density imported core

Specification

Density	: 0.70 gm/cm ³
Moisture content	: 8 to 10%
Glue shear strength	: Above 160 kgf (in dry) Above 140 kgf (in wet)
Tensile strength	: Above 500 kgf/cm ² (In the direction of face grain) Above 400 kgf/cm ² (In the direction of right angle to the face grain)
Sum of both value	: Above 1000 kgf/cm ²
Static bending strength	
MOE (Modulus of Elasticity)	: Above 8000 N/mm ² (Along the face grain) Above 4800 N/mm ² (Across the face grain)
MOR (Modulus of Rupture)	: Above 65 N/mm ² (Along the face grain) Above 48 N/mm ² (Across the face grain)
Screw holding strength	: Above 300 kgf
Nail holding strength	: Above 100 kgf
Swelling in water after 8 hours	: Less than 1%
Mycological strength	: Excellent
Retention of preservative	: Above 12 kg/m ³
Warranty	: Any manufacturing defects as per warranty certificate

MODULAR OCEANIC PREMIUM PLY

The place where culinary art is prepared needs to be fashionable too! Sylvan modular oceanic premium plywood complies with IS: 710 standard and is the perfect choice for beautiful and convenient modern modular kitchens.

End Usage: Modular Kitchen Furniture

Range of thickness: 14 mm | 16 mm | 23 mm

Raw Material, Production Process & U.S.P. :

- Formaldehyde Emission level: E1 as per European standard
- Fully preservative treated for borer, termite, and fungus
- Imported High-density timber
- Double Calibrated Tenderized composed core for a smooth finish as well thickness variation not more than 0.10mm – 0.25mm
- Unique glue line protection formula
- Undiluted Phenol-formaldehyde resin as adhesive
- Face – Gurjan / High-density imported timber
- Core – Gurjan or equivalent
- Glue – Phenol-formaldehyde

Specification

Density	: 0.70 gm/cm ³
Moisture content	: 8 to 12%
Glue shear strength	: Above 160 kgf (in dry) Above 140 kgf (in wet)
Tensile strength	: Above 500 kgf/cm ² (In the direction of face grain) Above 400 kgf/cm ² (In the direction of right angle to the face grain)
Sum of both value	: Above 1000 kgf/cm ²
Static bending strength	
MOE (Modulus of Elasticity)	: Above 8000 n/mm ² (Along the face grain) Above 4800 n/mm ² (Across the face grain)
MOR (Modulus of Rupture)	: Above 65 n/mm ² (Along the face grain) Above 48 n/mm ² (Across the face grain)
Wet bending strength	
MOE (Modulus of Elasticity)	: Above 4600 n/mm ² (Along the face grain) Above 3400 n/mm ² (Across the face grain)
MOR (Modulus of Rupture)	: Above 42 n/mm ² (Along the face grain) Above 35 n/mm ² (Across the face grain)
Screw holding strength	: Above 300 kgf
Nail holding strength	: Above 110 kgf
Swelling in water after 8 hours	: Less than 1%
Mycological strength	: Excellent
Retention of preservative	: Above 12 kg/m ³
Warranty	: Any manufacturing defects as per warranty certificate



MODULAR OCEANIC PREMIUM BLOCKBOARD

Sylvan+ Modular Oceanic Premium Blockboard with IS: 1659 standard is perfect for building enduring kitchen furniture. Structural quality and technical specifications make this Blockboard a favorite among experts and individuals, equally.

End Usage: Modular Kitchen Furniture

Range of thickness: 16 mm | 19mm | 23 mm | 25 mm,

Raw Material, Production Process & U.S.P. :

- Formaldehyde Emission level: E1 as per European standard
- Fully preservative treated for borer, termite, and fungus
- 100% imported pine wood
- Chemically treated and seasoned
- High dimensional stability & strength
- Calibrated Composed Core
- Thickness Variation – 0.10mm – 0.25mm

Specification

Density	: 0.65 gm/cm ³
Moisture content	: 8 to 15%
Adhesion of plies	: Excellent
MOE (Modulus of Elasticity) (n/mm ²)	: Above 5600
MOR (Modulus of Rupture) (n/mm ²)	: Above 55
Preservative	: C.C.B fixed type
Water absorption	: Below 1%
Screw holding strength	: 1150 N
Nail holding strength	: 650 N
Warranty	: Any manufacturing defects as per warranty certificate



MODULAR ROBUSTA PLY

Modular Robusta Plywood is IS: 710 certified and mainly used for kitchen and other home furniture, where there might be exposure to water. A perfect balance of density and moisture content fortifies the strength quotient of the plywood.

End Usage: Home Furniture (with probability of water exposure) |
Kitchen Cabinets | Kitchen Furniture

Range of thickness: 14 mm | 16 mm | 23 mm

Raw Material, Production Process & U.S.P. :

- Formaldehyde Emission level: E1 as per European standard
- Fully preservative treated for borer, termite, and fungus
- Calibrated core for uniform Thickness
- Unique glue line protection formula
- Undiluted Phenol-formaldehyde resin as adhesive
- Face – imported High-density timber
- Core – imported High-density core
- Calibrated
- Glue – Pheno-formaldehyde
- Face 0.30mm+

Specification

Density	: 0.55 gm/cm ³
Moisture content	: 8 to 10%
Glue shear strength	(in dry) : Above 155 kgf (in wet) : Above 135 kgf
Tensile strength	: Above 480 kgf/cm ² (In the direction of face grain) Above 370 kgf/cm ² (In the direction of right angle to the face grain)
Sum of value	: Above 950 kgf/cm ²
Static bending strength	
MOE (Modulus of Elasticity)	: Above 7800 N/mm ² (Along the face grain) Above 4700 N/mm ² (Across the face grain)
MOR (Modulus of Rupture)	: Above 64 N/mm ² (Along the face grain) Above 47 N/mm ² (Across the face grain)
Screw holding strength	: Above 280 kgf
Nail holding strength	: Above 100 kgf
Swell in water after 8 hours	: Less than 1%
Mycological strength	: Excellent
Retention of preservative	: Not less than 12 kg/m ³
Warranty	: Any manufacturing defects as per warranty certificate

MODULAR ROBUSTA BLOCKBOARD

Sylvan+ Modular Robusta Blockboard complies with IS: 1659 standard. Manifold manufacturing qualities make it stronger and ideal for usage in enhancing the elegance of interior decorations of homes, offices, and much more.

End Usage: Interior furniture | Partition | Paneling

Range of thickness: 16 mm

Raw Material, Production Process & U.S.P. :

- Formaldehyde Emission level: E1 as per European standard
- Fully preservative treated for borer, termite, and fungus
- 100% Pinewood
- High dimensional stability & strength
- Chemically treated
- Face: UC
- Core: UC
- Glue – Phenol Bonded
- Face thickness – 0.3mm

Specification

Density	: Normal 0.75 gm/cm ³
Moisture content	: 10 to 15%
Adhesion of plies	: Excellent
MOE (Modulus of Elasticity)	: Above 5000 N/mm ²
MOR (Modulus of Rupture)	: Above 50 N/mm ²
Preservative	: C.C.B fixed type
Water absorption	: Below 1%
Screw holding strength	: Above 1000 N
Nail holding strength	: Above 500 N
Preservative treatment	: B/B.A. treatment in battens.
Warranty	: Any manufacturing defects as per warranty certificate

MODULAR BLU PLY BWR

BWR (Boiling Water Resistant) grade Modular plywood is interior grade plywood. It is made from phenolic synthetic resins (plastic resins) and it is water-resistant. It is considered to be an excellent choice of plywood for a modern modular kitchen.

End Usage: Modular kitchen furniture

Range of thickness: 14 mm | 16 mm | 23 mm

Raw Material, Production Process & U.S.P. :

- Formaldehyde Emission level: E1 as per European standard
- Fully preservative treated for borer, termite, and fungus
- Imported timber
- Unique glue line protection formula
- Face – Imported hardwood
- Core – High-density timber core
- Calibrated core
- Face 0.3mm+
- Glue – Phenol-formaldehyde

Specification	strength: - > 130 kgf (in dry)
Density	: 0.50gm/cm ³
Moisture content	: 8 to 12% Glue shear
Glue shear strength	: > 130 kgf (in dry) > 100 kgf (in wet)
Adhesion of plies	: Excellent
MOE (Modulus of Elasticity)	: (n/mm ²)
Along the grain	: 5200 above
Across the grain	: 3500 above
MOR (Modulus of Rupture)	: (n/mm ²)
Along the grain	: 45 above
Across the grain	: 30 above
Water absorption	: below 1%
Screw holding strength	: above 160 kgf
Nail holding strength	: above 60 kgf
Warranty	: Any manufacturing defects as per warranty certificate

MODULAR BLU PLY MR

With excellent features like high longevity and mechanical strength, Sylvan Ply takes great pride in its product, Sylvan Modular BLU MR Grade Ply. This highly durable plywood is a well-favored product due to its multitude of attributes like unmatched screw holding capacity, nail holding strength, uniform thickness, etc it is also moisture resistant.

End Usage: Modular Kitchen Furniture

Range of thickness: 14 mm | 16 mm | 23 mm

Raw Material, Production Process & U.S.P. :

- Formaldehyde Emission level: E1 as per European standard
- Fully preservative treated for borer, termite, and fungus
- Imported timber
- Unique glue line protection formula
- Face: Imported hardwood
- Core: Hardwood Timber Core
- Glue – MUF grade resin
- Face thickness – 0.30mm

Specification

Density	: 0.50 gm/cm ³
Moisture content	: 8 to 12%
Glue shear strength	: > 130 kgf (in dry) > 90 kgf (in wet)
Adhesion of plies	: Excellent
MOE (Modulus of Elasticity)	: (N/mm ²)
Along the grain	: 4800 above
Across the grain	: 3200 above
MOR (Modulus of Rupture)	: (N/mm ²)
Along the grain	: 45 above
Across the grain	: 28 above
Water absorption	: Below 1%
Screw holding strength	: Above 150 kgf
Nail holding strength	: Above 50 kgf
Warranty	: Any manufacturing defects as per warranty certificate

FLUSH DOOR

Z+

Doors to happiness always stay open and are extremely durable, especially if the doors are Sylvan z+ lifetime warranty Flush Doors. The 100% tenderized composed core of the flush door is manufactured using pre-press technology and undergoes 3-tier chemical treatment against corrosion, borers, and termites.

End Usage: Doors

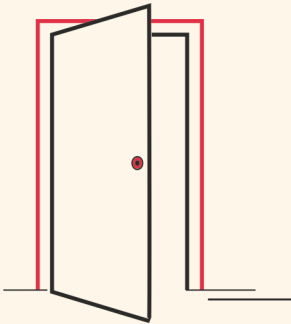
Range of thickness: 30mm | 32mm | 35mm | 38mm | 40mm | 45mm

Raw Material, Production Process & U.S.P. :

- Formaldehyde Emission level: E1 as per European standard
- Fully preservative treated for borer, termite, and fungus
- 100% tenderized composed core
- Pre-pressed technology
- 3 tier chemical treatment in cross band and cores
- High-density, high fibrous timber used for frame and filler
- Benzene based adhesive used
- Side frame not below 4 inches in a finished product
- Face thickness of 0.5'
- 100% boiling water-proof
- Fillers – pinewood
- Double core technology for long durability

Specification

Density	: Above 0.82 gm/cm ³
Moisture content	: 8 to 12%
The General flatness of shutter	: Less than 1 mm
Local plainness	: Below 0.3 mm
Impact indentation	: Below 0.15 mm
Shock resistance	: Can withstand more than 35 blows
Resistance to misuse	: Excellent
Glue adhesion strength	: Excellent
The Resistance of shutter to immersion in water	: Excellent
Nail holding strength	: Above 1200 N
Screw holding strength	: Above 1500 N
Warranty	: Any manufacturing defects as per warranty certificate



GATEWAY PINWOOD

Sylvan+ Gateway Pine Wood Flush Door is a quality product from the house of Sylvan Ply. It is made from high density and high fibrous pinewood and selected core veneers. The layers are bonded with phenol-formaldehyde resin and glue line protector. The resin is manufactured at Sylvan Ply's resin plant as per IS- 848: 2006 standards, using high-tech manufacturing facilities. The quality to produce sturdy & long-lasting door conforms to IS: 2202.

End Usage: Doors

Range of thickness: 30mm | 32mm | 35mm | 38mm | 40mm

Raw Material, Production Process & U.S.P. :

- Formaldehyde Emission level: E1 as per European standard
- Fully preservative treated for borer, termite, and fungus
- Selected species as per BIS specification
- Mechanized manufacturing process
- High-density and high fibrous pinewood
- 100 % chemically treated & seasoned as per BIS specification
- High dimensional stability & strength
- No warping and bending
- Smooth surface
- High shock and buckling resistance
- Zero deflection in flexure and edge loading.
- Core: High-density timber
- Face: Gurjan or Equivalent

Specification

Density	: 0.75 gm/cm ³
Moisture content	: 10 to 15%
The General flatness of shutter	: Not more than 1 mm
Local plainness	: Below 0.4 mm
Impact indentation	: Below 0.18 mm
Shock resistance	: Can withstand more than 30 blows
Resistance to misuse	: Excellent
Glue adhesion strength	: Excellent
The Resistance of shutter to immersion in water	: Excellent
Nail holding strength	: Above 1000 N
Screw holding strength	: Above 1250 N
Warranty	: Any manufacturing defects as per warranty certificate

GATEWAY HARDWOOD

Sylvan Gateway Hardwood (Flush Door) is a quality product from the house of Sylvan Ply. It is made from high class selected imported hardwood timber with high density and selected core veneers. The layers are bonded with phenol-formaldehyde resin and glue line protector. The resin is manufactured at Sylvan Ply's resin plant as per IS – 848: 2006 standards, using high-tech manufacturing facilities. Our quality to produce sturdy & long-lasting door confirms to IS: 2202 standards.

End Usage: Doors

Range of thickness: 30mm | 32mm | 35mm | 38mm | 40mm

Raw Material, Production Process & U.S.P. :

- Formaldehyde Emission level: E1 as per European standard
- Fully preservative treated for borer, termite, and fungus
- Selected species hardwood as per BIS specification
- Mechanized manufacturing process
- High class selected imported hardwood
- 100 % chemically treated & seasoned as per BIS specification
- High dimensional stability & strength
- Core: High-density imported core with thickness 2.7mm+
- Face: Gurjan or Equivalent

Specification

Density	: 0.75 gm/cm ³
Moisture content	: 09 to 13%
The General flatness of shutter	: Not more than 1 mm
Local plainness	: Below 0.5 mm
Impact indentation	: Below 0.20 mm
Shock resistance	: Can withstand more than 25 blows
Resistance to misuse	: Excellent
Glue adhesion strength	: Excellent
The Resistance of shutter to immersion in water	: Excellent
Nail holding strength	: Above 900 N
Screw holding strength	: Above 1150 N
Warranty	: Any manufacturing defects as per warranty certificate

ROBUSTA MIX PINE

Sylvan Robusta Mix Pine Flush Door is a wonderful product from the house of Sylvan Ply. It is made from high density and high fibrous pinewood and selected core veneers. The layers are bonded with phenol-formaldehyde resin and glue line protector. The resin is manufactured at Sylvan Ply's resin plant as per IS: 848: 2006 standards, using high-tech manufacturing facilities. The quality to produce sturdy & long-lasting door conforms to IS: 2202 standards.

End Usage: Doors

Range of thickness: 30mm | 32mm | 35mm | 38mm | 40mm

Raw Material, Production Process & U.S.P. :

- Formaldehyde Emission level: E1 as per European standard
- Fully preservative treated for borer, termite, and fungus
- Selected species as per BIS specification
- Mechanized manufacturing process
- Hardwood & Pinewood
- 100 % chemically treated & seasoned as per BIS specification
- High dimensional stability & strength
- No warping and bending
- Smooth surface
- High shock and buckling resistance
- Zero deflection in flexure and edge loading
- Face: 0.30 mm Imported Face
- Core: Imported Core

Specification

Density	: 0.70 gm/cm ³
Moisture content	: 10 to 15%
The General flatness of shutter	: Not more than 1 mm
Local plainness	: Below 0.3 mm
Impact indentation	: Below 0.20 mm
Shock resistance	: Can withstand more than 28 blows
Resistance to misuse	: Excellent
Glue adhesion strength	: Excellent
The Resistance of shutter to immersion in water	: Excellent
Nail holding strength	: Above 1000 N
Screw holding strength	: Above 1250 N
Warranty	: Any manufacturing defects as per warranty certificate

ROBUSTA HARDWOOD

Sylvan+ Robusta Hardwood (Flush Door) is a quality product from the house of Sylvan Ply. It is made from selected imported hardwood timber with high density and selected core veneers. The layers are bonded with phenol-formaldehyde resin and glue line protector. The resin is manufactured at Sylvan Ply's resin plant as per IS - 848: 2006 standards using high-tech manufacturing facilities. The quality to produce sturdy & long-lasting door conforms to IS: 2202 standards.

End Usage: Doors

Range of thickness: 30mm | 32mm | 35mm | 38mm | 40mm

Raw Material, Production Process & U.S.P. :

- Formaldehyde Emission level: E1 as per European standard
- Fully preservative treated for borer, termite, and fungus
- Selected species hardwood as per BIS specification
- Mechanized manufacturing process
- 100 % chemically treated & seasoned as per BIS specification
- High dimensional stability & strength
- Face: 0.30 mm Imported Face
- Core: Imported Core with thickness level 2.5mm+

Specification

Density	: 0.75 gm/cm ³
Moisture content	: 9 to 13%
The General flatness of shutter	: Not more than 1 mm
Local plainness	: Below 0.3 mm
Impact indentation	: Below 0.20 mm
Shock resistance	: Can withstand more than 25 blows
Resistance to misuse	: Excellent
Glue adhesion strength	: Excellent
The Resistance of shutter to immersion in water	: Excellent
Nail holding strength	: Above 900 N
Screw holding strength	: Above 1150 N
Warranty	: Any manufacturing defects as per warranty certificate



FIRE RETARDANT PLY

Sylvan BWR Grade Fire Retardant Ply has a perfect blend of fire-retardant and non-leachable properties, which has made it one of the top favorites. This fire-retardant ply is proven to be resistant to immediate ignition, spreading of flames on the surface, and flame penetration. This commercial ply is also resistant to fungi, insects, as well as pin-hole borers. Its low-flammable feature makes this plywood an exemplary option for a wide number of uses such as in kitchens, public food stalls, exhibition stalls, etc.

End Usage: Room and wall lining | Public food stalls | Boiler houses | Railway coaches | Partition Paneling | Auditoriums | Exhibition stalls | Kitchens | Office cubicles | Vehicle bodies/interiors

Range of thickness: 4mm | 6mm | 9mm | 12mm | 16mm | 19mm | 25mm

Raw Material, Production Process & U.S.P. :

- Formaldehyde Emission level: E1 as per European standard
 - Fully preservative treated for borer, termite, and fungus
 - Low flammability and smoke generation
 - Three-tier preservative treatment for deeper penetration
 - Resists fungi, termites, and borers
 - Dimensionally stable in adverse environments
 - Resists for ignition, surface spread, and penetration
 - Leach-resistant: fire retardant chemical will not wash out
- Formaldehyde emission within acceptable norms

Specification

Moisture content	: 10-12%
Glue shear strength	: > 140 Kgf
Water resistance test	: >115 Kgf (When tested after 8 hours boiling)
Adhesion of plies	: > Excellent
Preservative treatment	: > ccp treatment
Bending strength (kg/cm ²)	: > 475
Flammability test	: > 40 minutes
Flame penetration test	: > 35 minutes
Rate of burning*: when tested for standard 12-mm thickness	: > 40 minutes
Density	: > 0.80-0.85 gm/cm ³
Hygroscopicity (kept at about 90% relative humidity for a fortnight)	: >12-14%
Screw holding strength (kgf)	: > 200
Nail holding strength (kgf)	: > 50
Retention of fire-retardant chemicals (kg/m ³)	: > 70-80
Warranty	: Any manufacturing defects as per warranty certificate

100% PINE PLY

100% pine plywood from Sylvan is the ideal product to add ornamentation in beautiful rooms. The 100% pure pine ply has high dimensional stability and is well treated with chemicals to build resistance against borer and termite.

End Usage: Decorative Furniture | Partitions | Paneling

Range of thickness: 4mm | 6mm | 9mm | 12mm | 16mm | 19mm | 25mm

Raw Material, Production Process & U.S.P. :

- Formaldehyde Emission level: E1 as per European standard
- 100% Imported pine wood
- Chemically treated and seasoned
- High dimensional stability & strength

Specification

Density	: 0.72 to 0.75 gm/cm ³
Moisture content	: 8 to 10%
Glue shear strength	(In dry) : Above 155 kgf (In wet) : Above 135 kgf
Tensile strength	: Above 450 kgf/cm ² (In the direction of face grain) Above 350 kgf/cm ² (In the direction of right angle to the face grain)
Sum of value	: Above 950 kgf/cm ²
Static bending strength	
MOE (Modulus of Elasticity)	: Above 7700 N/mm ² (Along the face grain) Above 4500 N/mm ² (Across the face grain)
MOR (Modulus of Rupture)	: Above 55 N/mm ² (Along the face grain) Above 46 N/mm ² (Across the face grain)
Screw holding strength	: Above 250 kgf
Nail holding strength	: Above 100 kgf
Swell in water after 8 hours	: Less than 1%
Mycological strength	: Excellent
Retention of preservative	: Not less than 12 kgf/m ³
Warranty	: Any manufacturing defects as per warranty certificate

ELASTO FLEXI PLY

Sylvan Elasto Ply from the house of Sylvan Ply is flexible enough to convert the designer's imaginations to reality. Sylvan Elasto can be easily molded according to intricate designs. It is very strong, durable, flexible, and bears warranty against borer and termite attacks.

End Usage: Curved designs | Round tables | Experimental new designs

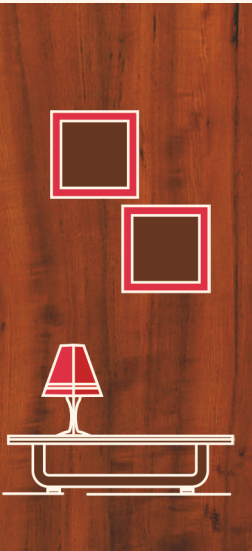
Range of thickness: 4mm | 6mm | 9mm | 12mm | 16mm | 19mm | 25mm

Raw Material, Production Process & U.S.P. :

- An IS 10701 Certified product
- Formaldehyde Emission level: E1 as per European standard
- Fully preservative treated for borer, termite, and fungus
- Selected imported hardwood
- Tenderized composed core
- Unique glue line protection formula

Specification

Density	: 0.75 gm/cc
Bending radius	: for 4 mm min, 6.5 cm for 6 mm min, 11 cm for 8 mm min, 14.5 cm
Warranty	: Any manufacturing defects as per warranty certificate



SHUTTERING PLY BUILDER

Sylvan Shuttering Ply is BWP grade plywood, treated with preservatives. Manufactured with selected hardwood, this ply withstands the load and force encountered during the pouring of concrete and vibration. It is more economical in repeated usage compared to other plywood varieties.

End Usage: Construction repairs and maintenance of buildings & bridges etc civil work beams roofing

Range of thickness: 4mm | 6mm | 9mm | 12mm | 16 mm | 19mm | 25mm

Raw Material, Production Process & U.S.P. :

- Formaldehyde Emission level: E1 as per European standard
- Fully preservative treated for borer, termite, and fungus
- Imported timber
- Unique glue line protection formula
- Undiluted phenol-formaldehyde resin as adhesive
- Core: Imported Hardwood
- Face: Imported Face

Specification

Tolerance	: up to 4 mm +/- 10% Above 4 mm +/- 5%
Moisture content	: 8 to 10%
Mycological test	: Complies with the requirement
Glue shear strength (Dry state)	: 1425 N
Preservative	: Acid copper chrome composition
Screw Holding Strength	: 290 Kgf above
Nail Holding Strength	: 115 Kgf above
Density	: 0.75 gm/cm ³
Glue shear strength (In Wet)	: 1200 N
Tensile strength	: Above 450 kgf/cm ² (In face grain) Above 300 kgf/cm ² (In right angle to the face grain)
Sum of both value	: Above 850 kgf/cm ²
Static bending strength	
MOE (Modulus of Elasticity)	: Above 7700 N/mm ² (Along the face grain) Above 4500 n/mm ² (Across the face grain)
MOR (Modulus of Rupture)	: Above 62 N/mm ² (Along the face grain) Above 47 N/mm ² (Across the face grain)
Weight bending strength	
MOE (Modulus of Elasticity)	: Above 4600 N/mm ² (Along the face grain) Above 3800 n/mm ² (across the face grain)
MOR (Modulus of Rupture)	: Above 46 N/mm ² (Along the face grain) Above 35 N/mm ² (Across the face grain)
Retention of Preservative Warranty	: Above 13Kg/m ³ : Any manufacturing defects as per warranty certificate

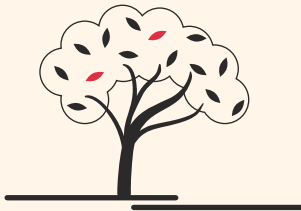
The Eco-Friendly Ply

Sylvan Plyboard (India) Ltd. is an ISO 14001:2015, ISO 45001:2018 & ISO 9001:2015 Certified Company and a member of The Indian Green Building Council, which is whole-heartedly committed to a clean environment and a worker-friendly atmosphere. Suitable pollution control devices like dust filter(s) and back filter which reduces carbon etc. are in place at this plant to remove all dust particles generated during the process of cutting, sanding, etc. Another important device that helps this plant remain completely eco-friendly is the Effluent Treatment Plant (ETP) that treats and recycles the water contaminated during various phases of the manufacturing process.



Raw Materials

The best available raw materials processed in the house are used to maintain the highest standards of quality. Imported hardwood timber (dipterocarpus) is processed in our state-of-the-art manufacturing facility, at Baidyabati, to produce the best quality face and core veneers. Being a wood species having high density and natural durability, it is globally renowned as the best wood for the manufacturing of plywood. 100% treated New Zealand pine. American yellow pines are used to produce the best quality blockboards.



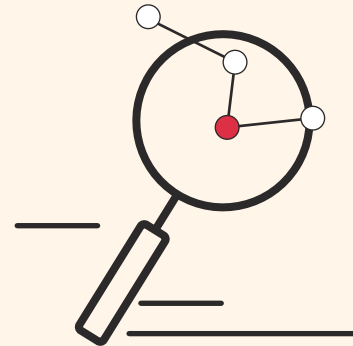
In House Resin

In house manufacturing of PF or MUF resin, produced in our modern resin plant under expert supervision, and tested as per IS specification, in our modern and sophisticated laboratory, enables us to produce panels with excellent internal bond strength, which does not deteriorate under any climatic changes i.e. hot, cold or wet conditions.



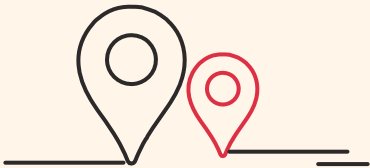
Research & Development

By introducing the latest technology and deploying efficient personnel along with adequate resources, we are striving to bring continual improvements, with the help of the best manufacturing techniques and rigorous Research & Development.



Our Growing Presence

- Andhra Pradesh
- Andaman & Nicobar Islands
- Bihar
- Chhattisgarh
- Goa
- Jharkhand
- Karnataka
- Maharashtra
- Madhya Pradesh
- Orissa
- Sikkim
- Tamil Nadu
- Telangana
- Uttar Pradesh
- West Bengal & Kerala



Prestigious clients of Sylvan Ply



Cold Storage

- Prime Cold Stores Pvt. Ltd.
(Amta, Howrah & Jangipur, Murshidabad)



Jewellery houses

- S. P. Kultiya Jewellery (Kolkata)
- Jewer jeweller (Hazaribag)
- Bhattar jewellery (Kolkata)
- Khazana jewellers



Hospitals

- Medica Super Speciality (Ranchi)
- Dr. B. Sinha Hospital (Ranchi)
- S S K M Hospital (West Bengal Govt. Under Pwd)
- N R S Hospital (West Bengal Govt. Under Pwd)
- R. G. Kar Hospital (West bengal Govt. Under Pwd)
- City Hospital (Gorakhpur)
- Neelabha Hospital (Gorakhpur)



Corporate Sector

- CESE
- Ambuja Neotia
- Anmol Biscuit
- S. P. Allied Engineer Indian Ltd.
- City Style (Garments Showrooms)
- Jabalpur Power & Technical Pvt.Ltd.
- Nirvana Modular Systems (Thane)
- Aamby Valley Limited (Pune)
- Aparna construction inc, (Aparna) (Andhra & Telengana)
- Andhra Pradesh Co-operative Society (APCO) (Andhra & Telengana)
- Lodha Constructions Limited (LODHA) (Andhra & Telengana)
- Mega Engineering Infrastructure Limited (MEIL) (Andhra & Telengana)
- My Home Constructions Limited (My Home) (Andhra & Telengana)



Central Govt. Sectors

- MES (Military Engineers service)
- BITM (Birla Institute & Technological Museum)
- Science City
- Bharat Petroleum
- Postal Civil Circle (Eastern Zone)



W.B Govt. Sectors:

- PWD (Public Works Department)
- West Bengal Forest Department
- West Bengal Tourism



Banking Sector

- Allahabad Bank
- Andhra Bank
- Bank of India
- Bank of Baroda
- Burdwan Central Co-operative Bank
- Corporation Bank
- Canara Bank
- Central Bank
- Dena Bank
- Federal Bank
- Panchimbanga Gramin Bank
- Indian Bank
- Indian Overseas Bank

- IDBI Bank
- Oriental Bank of Commerce
- Panjab National Bank
- Panjab & Sind Bank
- State Bank of India
- State bank of Bikeneer & Jaipur
- Syndicate Bank
- United Bank of India
- Union Bank of India
- UCO Bank
- Vijay Bank
- National Insurance Company Ltd.
- Life Insurance Corporation (Bihar & Jharkhand)
- Sbi Life Insurance.

Hotels & Hospitality

- Mayfair Hotels & Resorts (Bhubaneswar/Puri/Gopalpur)
- Pride Hotel (Kolkata)
- ITC Hotel (Kolkata)
- The Sonnet Hotel (Jamshedpur, Kolkata)
- Hotel lee Garden (Puri)
- Hotel Puspak (Bhubaneswar, Odisha)
- Ramda Hotel (Jamshedpur)
- Hotel Ziva (Jamshedpur)
- Hotel Mahal in (Jamshedpur)
- Hotel Smita (Jamshedpur)
- City Palace (Ranchi)
- Hotel Sunrise (Ranchi)
- The Lalit Great Eastern Hotel (Kolkata)
- ITC Group of Hotels (ITC Group) (Andhra & Telengana)
- Hotel Pinnacle, Lda Colony, Lucknow
- Hotel Millenia Regency, Faizabad Road, Lucknow
- Shri Ganga Valley Hotel, Bithor Rorad, Kanpur

Educational Sectors

- Dav Public School (East Bengal, Odisha, Jharkhand)
- Christian Missionary Trust (Krishnanagar, West Bengal)
- Iskon (Mayapur, West Bengal)
- Model School (Burdwan, West Bengal)
- Bengal Engg.College (Durgapur, West Bengal)
- Assansol Engg. College (Assansol, West Bengal)
- Jalpaiguri Engg. College (Jalpaiguri, West Bengal)
- St. Xaviers' (Kolkata, Bhubaneswar)
- Delhi Public School
- Durgapur Academy Trust
- M. P. Birla School (Park Circus & Behala, Kolkata)
- Banaras Hindu University
- Shri Ram Institute of Technology (Jabalpur)
- Gyan Ganga Institute of Technology & Sciences (Jabalpur)
- Lakhmi Chand Institute of Technology (Bilaspur)
- Royal Senior Secondary School (Jabalpur)
- Don bosco (Krishnanagar)
- Seth M.R.Jaipuria School, Harahuwa, Varanasi
- Amrit Public School, Mau
- Banaras Hindu University
- Dr Virendra Swaroop School (Kanpur)
- Mother Teresa School (Kanpur)
- Guru Sri Gorakhnath Institute of Medical Sciences (Gorakhpur)
- G.D.Goenka Public School, Deoria Road, Gorakhpur
- The Pillers School (Gorakhpur)

Real Estate

- Avani Oxford (Avani Group)
- Diamond City (North/ South)
- Ideal Group
- South City Centre
- Mani Group
- Keventer
- Silver Spring
- PS Group
- Alcove Group
- Amrit Kunj Co – Op Housing Society Ltd.
- Orchid Resorts Pvt. Ltd.
- Durgapur Real Estate Pvt.Ltd.
- Larsen & Toubro
- Bengal Greenfield Housing Development
- Hiland Group
- Shapoorji Pallonji
- Arrjavv Group
- Design Unite
- Dezino Group
- Creative Interior
- Weldcraft
- Er. Sameer Namdeo
- Amazing Art (M. P.)
- K. L. Thakur & Associates (Jabalpur)
- Infocus Interior (Jabalpur)
- Shreyash Enterprise (Mumbai)
- Ashir Interior (Mumbai)



PLYWOOD | BLOCKBOARD | FLUSH DOOR

Sylvan Plyboard (India) Limited

(AN ISO 9001, ISO 14001 & 45001 Certified Company)



IS : 701



IS : 1659



IS : 303



IS : 2202



Health, Safty and
environment friendly



Negligible emission
for safe IA quality

Regd. Office:

41, B.B. Ganguly Street, 4th Floor,

"Central Plaza", Kolkata 700 012

Ph: +91 33 2211 7419 | Fax: +91 33 2211 7418

Corp. Office:

5, Nimtalla Ghat Street,

Kolkata - 700 006

Ph: +91 33 2273 5181 | Fax: +91 33 2273 5182

Follow us on: [f](#) [@](#) [in](#) [t](#) | www.sylvanply.com